

LDI[™]medical

Sustainable Technology · Clinical Innovation · Ultimate Performance



EnviroBones[®] Donor Restoration Products

June 2022

EnviroBones[®] Donor Restoration Products

- Skin Restoration
- Upper Extremity Restoration
- Lower Extremity Restoration
- Sternum Plate Restoration

LDImedical[™]
Sustainable Technology · Clinical Innovation · Ultimate Performance



EnviroSorb® Skin Restoration

EnviroSorb Skin Restoration Pack

For restoration after full thickness skin recovery. The wings and suspender flaps of absorbent material also act to provide bulk maximizing the natural appearance of the donor

Excellent Absorption

The EnviroSorb Skin Restoration Pack absorbs 1 gallon of fluid per square yard of fabric!

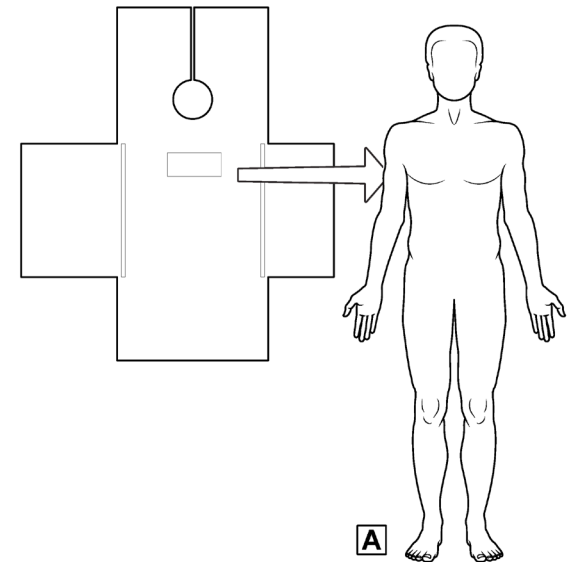


EnviroSorb[®] Skin Restoration

Instructions for Use

- Lay the EnviroSorb Skin Restoration Pack on the work surface with the neck opening where the head and neck will be placed
- Pretreat areas of full skin thickness recovery that will be in direct contact with the skin recovery pads

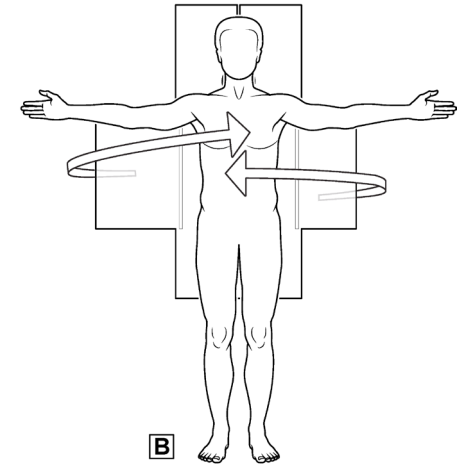
LDImedical™
Sustainable Technology. Clinical Innovation. Ultimate Performance.



EnviroSorb® Skin Restoration

- Place body on top of the EnviroSorb Skin Restoration Pack with the soft, absorbent material facing up.
- Fold Body Section over to the opposite side and secure with tape (do not wrap around arms)
 - Modify as necessary to fill cavities for best viewing outcome
 - Secure pelvic area with tape
 - This helps to secure the EnviroBones Lower Extremity Prosthetics

LDImedical™
Sustainable Technology. Clinical Innovation. Ultimate Performance.



EnviroSorb® Skin Restoration

- Make a cut between the legs to make donning an LDI Mort-Port™ Unionall easier
- Secure pelvic area with tape
 - You can use or discard the Body Section to cover the donor or use it to fill the cavities to increase the likelihood of natural presentation.

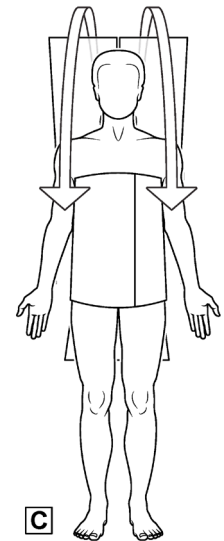
LDImedical™
Sustainable Technology. Clinical Innovation. Ultimate Performance.



EnviroSorb® Skin Restoration

- Place the head and neck in the Neck Opening. Fold Shoulder Straps over to create a barrier and tape securely.
- Excess materials can be used to wrap legs for extra absorption and then placed inside the EnviroBones® Lower Extremity Prosthetics.

LDImedical[™]
Sustainable Technology. Clinical Innovation. Ultimate Performance.



EnviroBones[®] Upper Extremity Prosthetics

EnviroBones Upper Extremity Prosthetics

Replicate the body's natural state and make it easier for tissue recovery and funeral professionals to work while considering the environmental impact.

Hand placement - When wake attendees cannot look at their loved one's face, they look at their hands. Therefore, natural hand placement is paramount.

The EnviroBones Upper Extremity Prosthetic allows for easy, natural hand and arm positioning to honor the donor also make the Funeral Director's job easier.



EnviroBones[®] Upper Extremity Prosthetics

Instructions for Use

1. Adjust the upper arm and forearm prosthetic depending on arm length
 - Tie off the auxiliary and radial arteries and leave ties long.
 - Remove end piece with the blue absorbent material when recovering only upper arm
2. Place the Prosthetic inside the arm
 - Modify the arm to maximize natural presentation
 - Use the accordion-style center piece to correctly size the arm
 - Bulk filler may be necessary to form the arms in order to make them natural
 - Use absorbent powder where necessary
 - Close the with tight stitching and sealing
 - Pose the hands and hand block as needed as the donor continues to



EnviroBones[®] Lower Extremity Prosthetics

EnviroBones Lower Extremity Prosthetics

For restoration of the femur and tibia/fibula from the hip to ankle

Industry first external restoration solution results in a full, natural appearance. The external solution also minimizes the need for suturing and therefore reducing potential needlesticks

Foot placement The EnviroBones Lower Extremity Prosthetic allows for the attachment of the foot in a very natural position with the toes properly oriented.

LDImedical[™]
Sustainable Technology. Clinical Innovation. Ultimate Performance.



EnviroBones[®] Lower Extremity Restoration

Instructions For Use

1. Place prosthetic under recovered leg

- Roll sides of the prosthetic to connect at the inseam of the leg and the holes at the top at the hip
 - Use Velcro in the center then push fasteners at the top and bottom to secure and form the leg
- Suture the prosthetic to the hip using the holes at the top of the prosthetic

LDImedical™
Sustainable Technology. Clinical Innovation. Ultimate Performance.



EnviroBones[®] Lower Extremity Restoration

2. Secure the feet

- Use self-adhesive tape to secure feet in the proper orientation
 - Tape in a figure 8 fashion around the ankle
- It is also possible to secure feet using ligature and the holes at the bottom of the prosthetic

LDImedical™
Sustainable Technology. Clinical Innovation. Ultimate Performance.



EnviroBones® Sternum Restoration

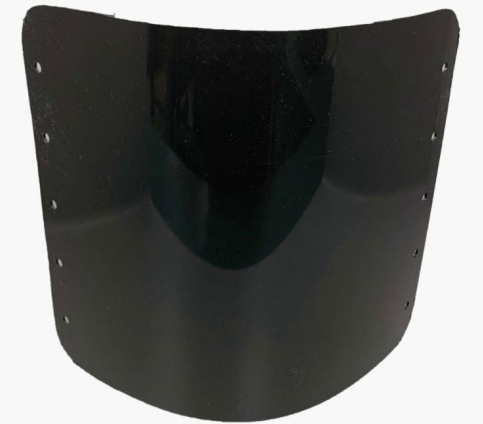
EnviroBones Sternum Plate

For restoration of the chest and sternum. The concave design presents the chest from appearing sunken

Anatomically correct

Tapered construction mimics the normal anatomy maximizing the natural presentation for viewing.

LDImedical™
Sustainable Technology. Clinical Innovation. Ultimate Performance.



EnviroBones[®] Sternum Plate

Instructions for Use:

- Open incision(s) and use blunt dissection to fit recovered area(s)
- Sternum Plate should extend beyond recovered area(s)
- Close incision with normal tight stitch
- Use scissors to modify as necessary

LDImedical™
Sustainable Technology. Clinical Innovation. Ultimate Performance.

