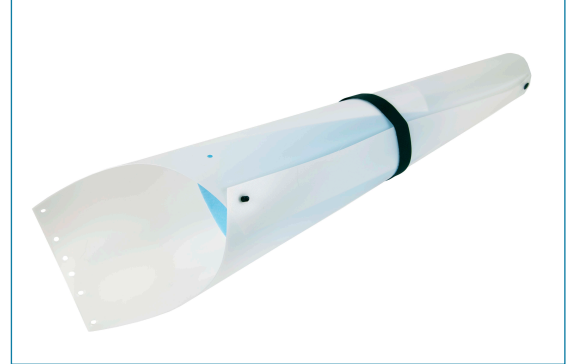


## Lower Extremity Prosthetic

PART #	SIZE	PACKAGING
EB-LE	32"L x 23"W Lower Extremity	6 pair per case



### Product Details

- **Intuitive:** Developed by Tissue & Recovery specialists
- **Anatomically Correct:** Designed for proper leg replacement with optimal support
- **Easy to Use:** Simple attachment can be reopened for embalming
- **Absorbent Pad Attached:** For absorption of fluids
- **Multiple Fastening Options:** For optimal attachment results

### Eco-Friendly—Minimizing Chemicals of Concern and Waste

- Low VOC emissions during incineration, for crematorium compatibility
- High density polyethylene, PVC and Latex-Free
- Made with over 80% post consumer recycled material